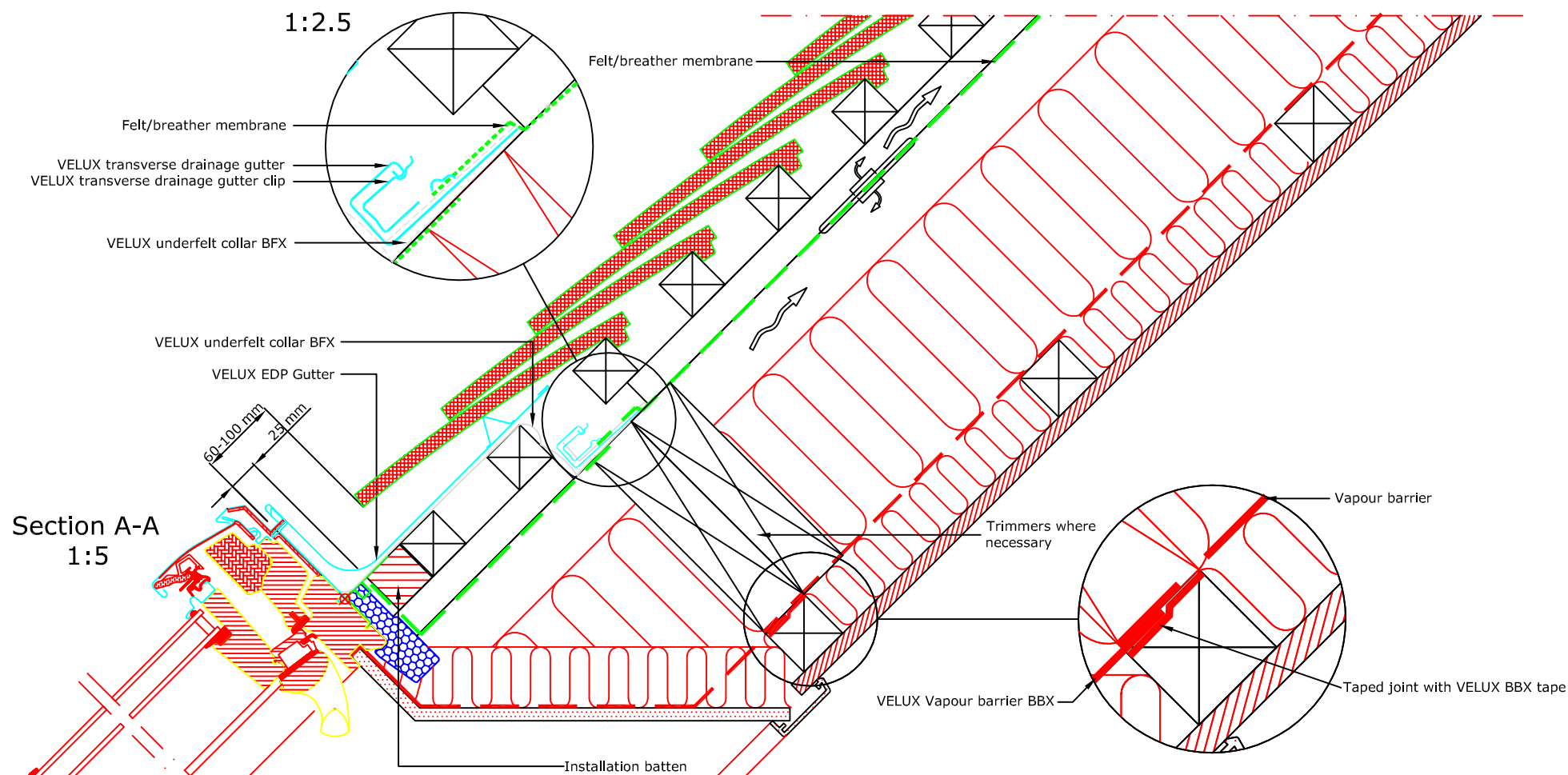
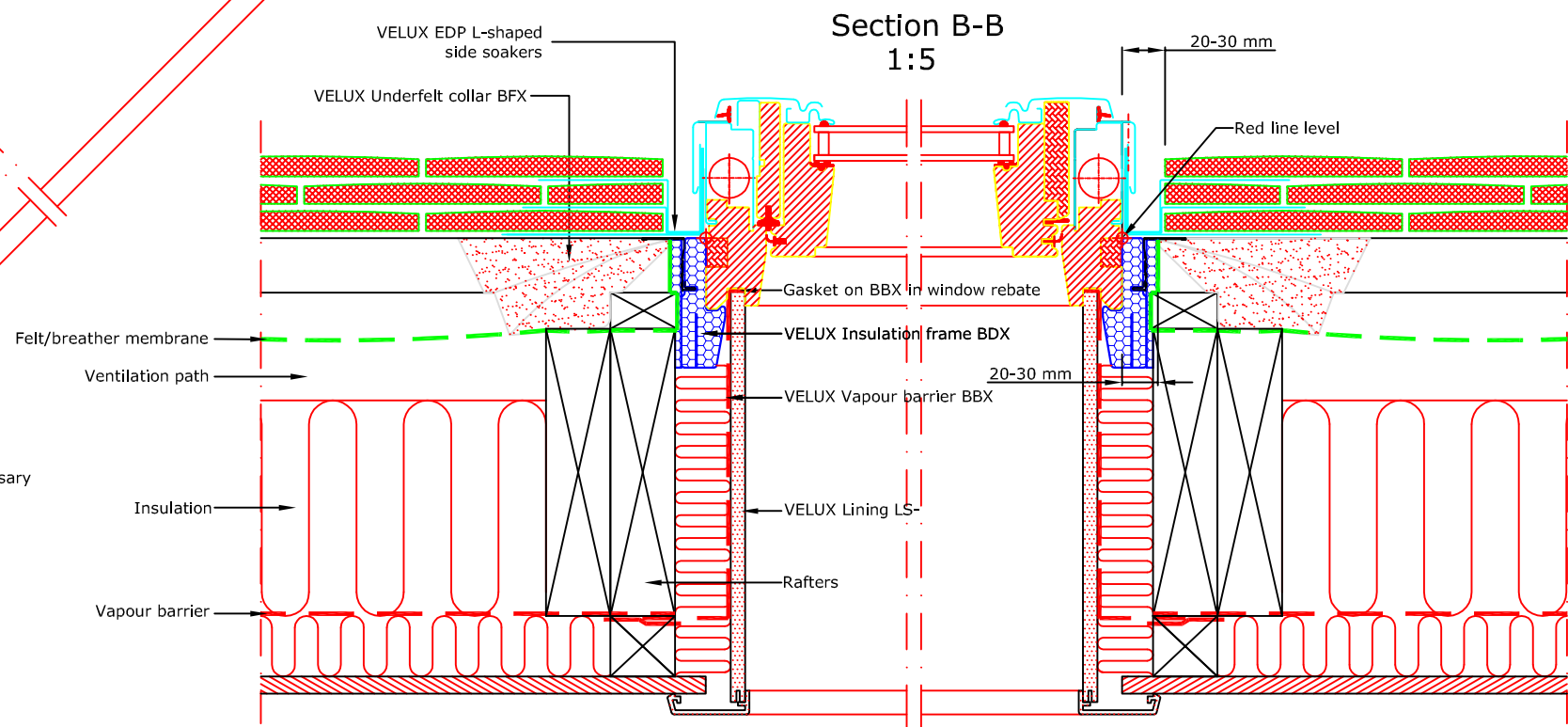
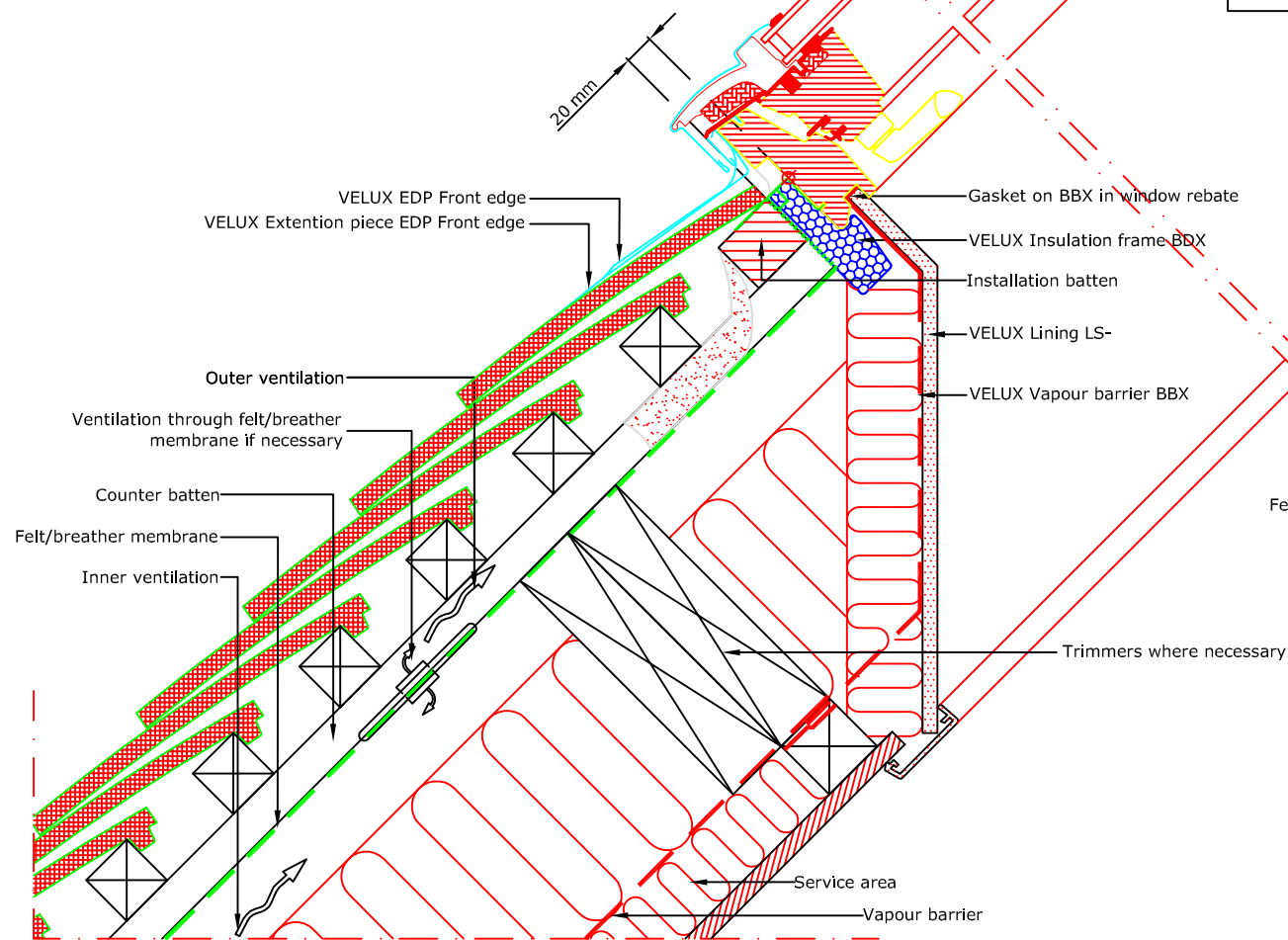


TYPICAL ELEVATION



Section A-A  
1:5

- VELUX Products:
- GPL  
15°-55°  
\* 55°-75° with special springs
  - EDP  
25°-90°
  - BFX
  - BDX
  - BBX
  - LS-
- Roof covering:
- PLAIN TILES  
< 15 mm



VELUX Company Ltd  
Woodside Way  
Glenrothes, Fife KY7 4ND  
tel: +44 (0) 1592 778 225

VELUX top-hung roof window  
**GPL single installation into plain tile**  
EDP flashing kit - standard install into plain tiles up to 15mm thick  
*All dimensions are in millimetres where shown*

NOTE! When installing VELUX roof windows, flashings and accessories, please ensure compliance with building regulations and British/European standards where necessary. This detail represents the principles of a typical installation only and the design and specification of the final detail is the responsibility of others.

Latest revision:

Date: **January 2014**

File name:

Rev no:

**GPL-EDP-0114-1013**

Rev date:

Drawn: **PJH**

Scale: **1:5 approx. @ A3**